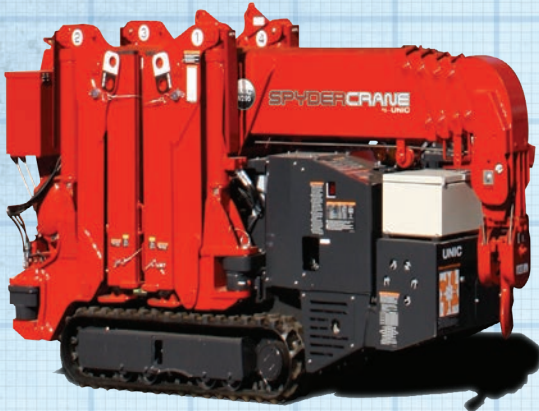


URW295 MINI-CRAWLER CRANE

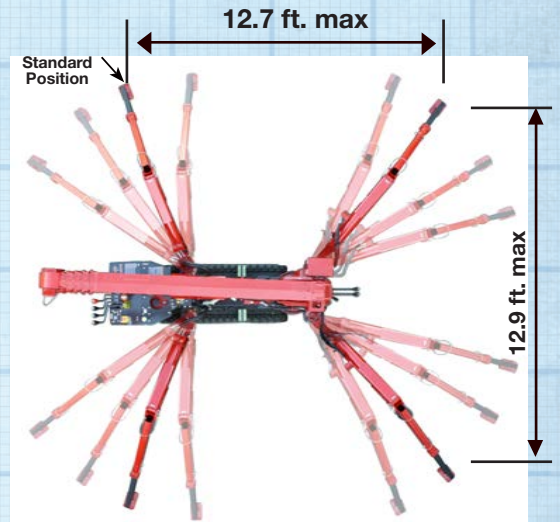
SPYDERCRANE

TECHNICAL SPECIFICATIONS ASME/B-30.5 Compliant



- Only 24" wide
- Full-function wireless radio remote controls
- Centrally located infinite variable controls - Automatic throttle
- Onboard self-diagnostic computer system
- Hexagonal boom design with 31 ft. tip height (37 ft. with jib)
- Anti-two block system
- Automatic hook stow system
- UNIC patented outrigger overturn monitoring system to allow 52 outrigger configurations.
- 360 Degree continuous rotation

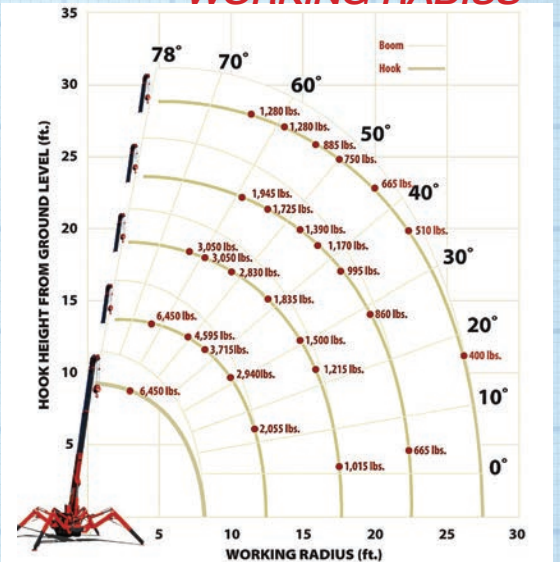
52 OUTRIGGER POSITIONS



LOAD CHART Lifting capacity varies depending on outrigger configuration and boom length and angle.

BOOM SECTION 1 EXTENDED BOOM SECTION 1 + 2 EXTENDED										
Working Radius (ft.)	3	4.5	5	6	7	8	10	11	13	
Outriggers Maximum (lbs.)	6,450	6,450	5,920	5,040	4,595	3,715	2,940	2,275	2,055	
Outriggers Minimum (lbs.)	4,485	4,485	4,485	3,270	2,500	1,505	1,150	840	620	
BOOM SECTION 1 + 2 + 3 EXTENDED										
Working Radius (ft.)	7	8	9	10	11	13	15	16	18	
Outriggers Maximum (lbs.)	3,050	3,050	3,050	2,830	2,275	1,835	1,500	1,215	1,015	
Outriggers Minimum (lbs.)	1,835	1,500	1,240	1,170	905	685	555	420	330	
BOOM SECTION 1 + 2 + 3 + 4 EXTENDED										
Working Radius (ft.)	11	12	13	15	16	18	20	21	23	
Outriggers Maximum (lbs.)	1,945	1,945	1,725	1,390	1,170	995	860	775	665	
Outriggers Minimum (lbs.)	995	815	730	620	485	375	290	245	200	
BOOM SECTION 1 + 2 + 3 + 4 + 5 EXTENDED										
Working Radius (ft.)	12	13	15	16	18	20	21	23	26	28
Outriggers Maximum (lbs.)	1,280	1,280	1,060	885	750	665	575	510	400	355
Outriggers Minimum (lbs.)	840	705	620	510	420	355	290	220	155	135

WORKING RADIUS



Rated Load for Extension Jib in lbs.

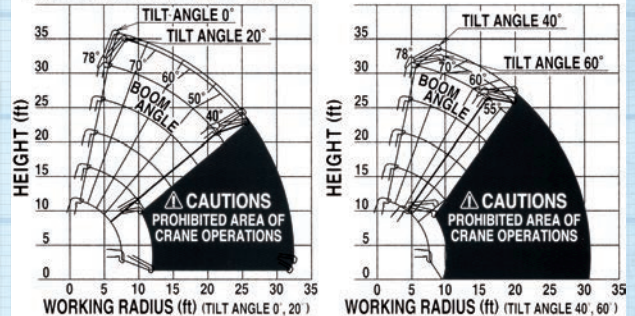
1st TO 4th BOOM SECTIONS												
Boom Angle	78°	75°	70°	65°	60°	55°	50°	40°	30°	20°	10°	0°
Tilt Angle 0°	1,580	1,580	1,580	1,140	810	590	590	PROHIBITED AREA OF CRANE OPERATIONS				
Tilt Angle 20°	1,580	1,580	1,580	1,140	810	590	590					
Tilt Angle 40°	1,580	1,580	1,580	1,140	810							
Tilt Angle 60°	1,580	1,580	1,580	1,140	810							
5th BOOM SECTION ONLY												
Boom Angle	78°	75°	70°	65°	60°	55°	50°	40°	30°	20°	10°	0°
Tilt Angle 0°	920	920	920	590	480	370	260	PROHIBITED AREA OF CRANE OPERATIONS				
Tilt Angle 20°	920	920	920	590	480	370	260					
Tilt Angle 40°	920	920	920	590	480							
Tilt Angle 60°	920	920	920	590	480							

Rated Load for Searcher Hook in lbs.

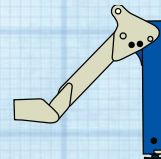
1st TO 4th BOOM SECTIONS											
Working Radius (ft.)	12.5	13	15	16	18	20	21	23	26	27.5	
Outriggers Maximum (lbs.)	1,560	1,560	1,060	940	740	570	520	410	310	240	
Outriggers Minimum (lbs.)	560	460	330	280	190	120	110	PROHIBITED AREA OF CRANE OPERATIONS			
5th BOOM SECTION ONLY											
Working Radius (ft.)	12.5	13	15	16	18	20	21	23	26	30	32.5
Outriggers Maximum (lbs.)	1,120	1,010	870	740	670	570	510	410	310	220	130
Outriggers Minimum (lbs.)	560	460	330	280	190	120	110	PROHIBITED AREA OF CRANE OPERATIONS			

| 1 Part line - 2,100 lbs | 2 Part line - 4,100 lbs | 3 Part line - 5,000 lbs | 4 Part line - 6,450 lbs |

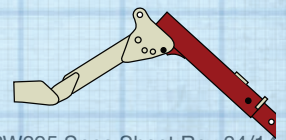
WORKING RANGE (FOR EXTENSION JIB)



OUTRIGGERS MINIMUM



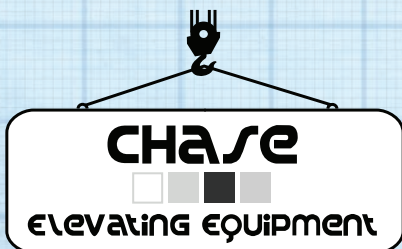
OUTRIGGERS MAXIMUM



URW295 MINI-CRAWLER CRANE

SPYDERCRANE by **UNIC**
RETOOLING INDUSTRIES

		URW295CURS & URW295CURS/P		URW295CUMRS & URW295CUMRS/P		URW295CUBRS		URW295C1URS		URW295C1UMRS	
Engine / Motor	Type:	Gasoline, Gasoline/Propane		Gasoline, Electric/Gasoline, Electric/Propane		Battery powered		Diesel		Diesel & Electric	
Crane Capacity	Capacity:	6,450 lbs. @ 4.6 ft.									
Max Working Radius	Maximum:	1.4 to 28.0 ft.									
Tip Height	Approximate:	31.0 ft.									
Turning Radius (ft.)	Minimum:	Turns within its dimensions									
Dimensions (ft.)	Folded: (w x h x l)	2.0 x 4.6 x 9.0		2.0 x 4.8 x 9.0		2.0 x 4.6 x 9.0		2.0 x 4.6 x 9.1		2.0 x 4.8 x 9.0	
Weight	Unladen:	4,100 lbs.		4,380 lbs.		4,170 lbs.		4,245 lbs.		4,525 lbs.	
Outrigger Point Loading	Maximum:	152.2 psi on standard outrigger pads (7" x 4.5") (Specific point landing available upon request)									
Winch Speed	Capacity	Gasoline	Propane	Gasoline	Electric	Battery	Electric	131 ft. / minute at 4th layer		Diesel	Electric
	2,250 lbs. at 4th layer Single-Line	131 ft. / minute at 4th layer Single-Line		131 ft. / minute at 4th layer Single-Line		89 ft. / minute at 4th layer Single-Line		131 ft. / minute at 4th layer Single-Line		Single-Line	
Telescopic System	Boom length:	8.3 to 28.4 ft.									
	Telescoping speed:	Gasoline	Propane	Gasoline	Electric	Battery	Electric	20 ft. / 20 sec		Diesel	Electric
		20 ft. / 20 sec		20 ft. / 20 sec		20 ft. / 20 sec		20 ft. / 20 sec		20 ft. / 20 sec	
	Boom type:	5-section hydraulically telescoping boom, hexagonal box construction									
Boom Lift Speed		Gasoline	Propane	Gasoline	Electric	Battery	Electric	0°-78°/11 sec		Diesel	Electric
		0° - 78° / 11 sec		0°-78°/ 11 sec		0°-78°/ 15 sec		0°-78°/15 sec		0°-78°/ 15 sec	
Traction System	Travel speed:	0 to 1.43 mph									
	Gradability:	20°									
	Track ground pressure:	6.96 psi									
Engine / Motor	Manufacturer:	Mitsubishi		Mitsubishi		N/A		DC		Kubota	
	Tank capacity:	1.85 gal		1.85 gal						1.85 gal	
	Maximum output:	Gasoline	Propane	Gasoline	Electric	Battery	Electric	7.2 kw		Diesel	Electric
		13 hp / 11.7 hp		13 hp / 5 hp / 220V Single phase		48V / 110V				7.2 kw / 5 hp / 220V single phase	
	Starting method:	Electric and Recoil Start as Standard				N/A		Electric Start			
Additional Equipment Offered		<ul style="list-style-type: none"> 5 Axis fixed Glass Manipulator - Direct attachment to boom for rigid application 6 ft. offsettable jib with searcher hook includes single line swivel ball Custom SPYDERCRANE trailer with track mats, tool box, outrigger pads and fuel containers 					<ul style="list-style-type: none"> Auxiliary winch kit, 2000 lb single line pull, 330 ft. 5/16" wire rope, 90 FPM MYLAR non-marking tracks Single-part reeving and two-part reeving capability 				



1-888-427-8082
www.chaseee.com

Product specifications are subject to change without notice. No specific training or license is required to operate the SPYDERCRANE in most areas, but operators are responsible for knowing and meeting all safety requirements and regulations.

URW295 Spec Sheet Rev 04/14